

2024 RECYCLING SCHEDULE

Curbside Collection

THURSDAYS

All streets north of the Lehigh Valley RR tracks and Metuchen Road including Universal Ave neighborhood.

CURBSIDE COLLECTION SCHEDULE			
January	11 • 25	August	8 • 22
February	8 • 22	September	5 • 19
March	7 • 21	October	3 • 17 • 31
April	4 • 18	November	14 • 28*
May	2 • 16 • 30	December	12 • 26
June	13 • 27	January 25	9 • 23
July	11 • 25	February 25	6 • 20

FRIDAYS

All streets south of the Lehigh Valley Railroad tracks and Metuchen Road.

CURBSIDE COLLECTION SCHEDULE			
January	12 • 26	August	9 • 23
February	9 • 23	September	6 • 20
March	8 • 22	October	4 • 18
April	5 • 19	November	1 • 15 • 29
May	3 • 17 • 31	December	13 • 27
June	14 • 28	January 25	11 • 25
July	12 • 26	February 25	7 • 21

* Thanksgiving: Pick Up Saturday Nov. 30th
 Missed pickup? Call: 908-755-2187.
 Rejected bins will be emptied on the next collection date if corrected. Or bring to the Recycling Center.

Pickups canceled by storms will be done Saturday.
 Borough Recycling Coordinator: 908-226-7621

Recycling Center

	2024	2024 CLOSED HOLIDAYS
Monday	Closed	3/29/2024
Tuesday	11:00-7:00	6/21/2024
Wednesday	Closed	7/4/2024
Thursday	8:00-4:00	11/5/2024
Friday	8:00-4:00	11/28/2024
Saturday	8:00-4:00	11/29/2024
		12/25/2024

Yard Waste Site

(End of Kenneth Avenue)

Open to South Plainfield Residents only (decal required)

	2024		2024 CLOSED HOLIDAYS
	1/1/24-3/31/24	4/1/24-12/31/24	
Monday	Closed	8:00-4:00	5/27/2024
Tuesday	Closed	7:00-5:00	6/21/2024
Wednesday	Closed	8:00-4:00	7/4/2024
Thursday	Closed	8:00-4:00	9/2/25
Friday	Closed	8:00-4:00	10/14/2024
Saturday	8:00-4:00	8:00-4:00	11/5/2024
			11/28/2024
			11/29/2024
			12/25/24

The Recycling Complex is closed on Borough Holidays. Weather-related closings will be announced on 1450 WCTC & listed on NJ101.5.com & RecycleCoach.
 Call the Hotline 908-226-7620 for updates

Bulk Waste For non-recyclable bulk waste items, call the DPW at 908-755-2187 to make a curbside bulk waste appointment. Please visit www.southplainfieldnj.com/publicworks/bulkwaste for details.



Sign up with RecycleCoach and get your waste disposal questions answered! Download your personal collection calendar. Find out "What Goes Where?" Get reminders to set out your bins, warnings about storm cancellations, and more! Find the RecycleCoach app on the Recycling page at the Borough website: www.southplainfieldnj.com. Or scan this QR code:

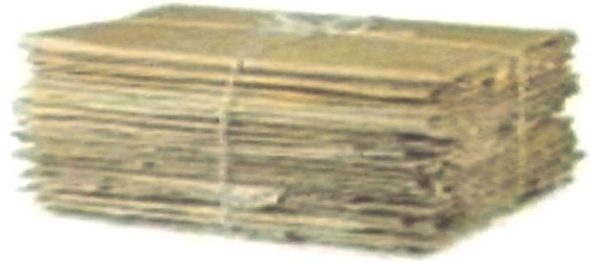


SCAN ME

TURN OVER FOR 2024 GUIDE TO RECYCLING

2024 GUIDE TO RECYCLING

PLEASE NOTE:
CONTAMINATED BINS WILL NOT BE EMPTIED!



STACK AND TIE CARDBOARD

MCIA ACCEPTABLE RECYCLING



PLASTICS
#1 OR #2 ONLY

PETE HDPE

CHECK THE BOTTOM OF THE PLASTIC FOR THE RECYCLING NUMBER TO CONFIRM

RINSED & EMPTIED

DO NOT USE PLASTIC BAGS!

ALUMINUM/STEEL CANS & GLASS BOTTLE

RINSED & EMPTIED

MIXED PAPER

PAPER, NEWSPAPER, MAGAZINE, JUNK MAIL, CATALOGS

CORRUGATED CARDBOARD

CEREAL BOXES, SHIPPING BOXES

FLATTEN & BUNDLE CARDBOARD
SIZE LIMIT: 48" X 48" X 12"

"WHEN IN DOUBT, THROW IT OUT!"

RECYCLING NOTES: Market conditions make it important that only valuable recyclables go into your curbside recycling bins. Do not put anything into your bins that is not shown in the "ACCEPTABLE RECYCLING" pictures above. Questions? Call the Recycling Coordinator: 908-226-7621.

DO NOT PUT ANY OF THESE IN YOUR CURBSIDE BINS

- Plastic Bags
- Pizza Boxes
- Styrofoam™
- Shredded Paper
- Food or Unrinsed Food Containers: Foil
- Dishware, Drinking Glasses, Mirrors, Light Bulbs
- Drinking Cups (plastic or paper)
- "Tanglers" (electric cords, garden hoses, ribbon)
- Pots, Pans, Small Appliances
- Rigid Plastic (flowerpots, tubs, toys, clothes hangers)

These are some of the many kinds of waste items that cannot be put into your blue bin. It is impossible to list all prohibited items. Visit the Borough's website (www.southplainfieldnj.com) and click on "Recycling" for more information about our program. Also, see program details in the MCIA's brochure at <http://www.middlesexcountynj.gov/Government/Departments/mcia/Documents/curbside/2024/southPlainfield.pdf>

TURN OVER FOR 2024 GUIDE TO RECYCLING