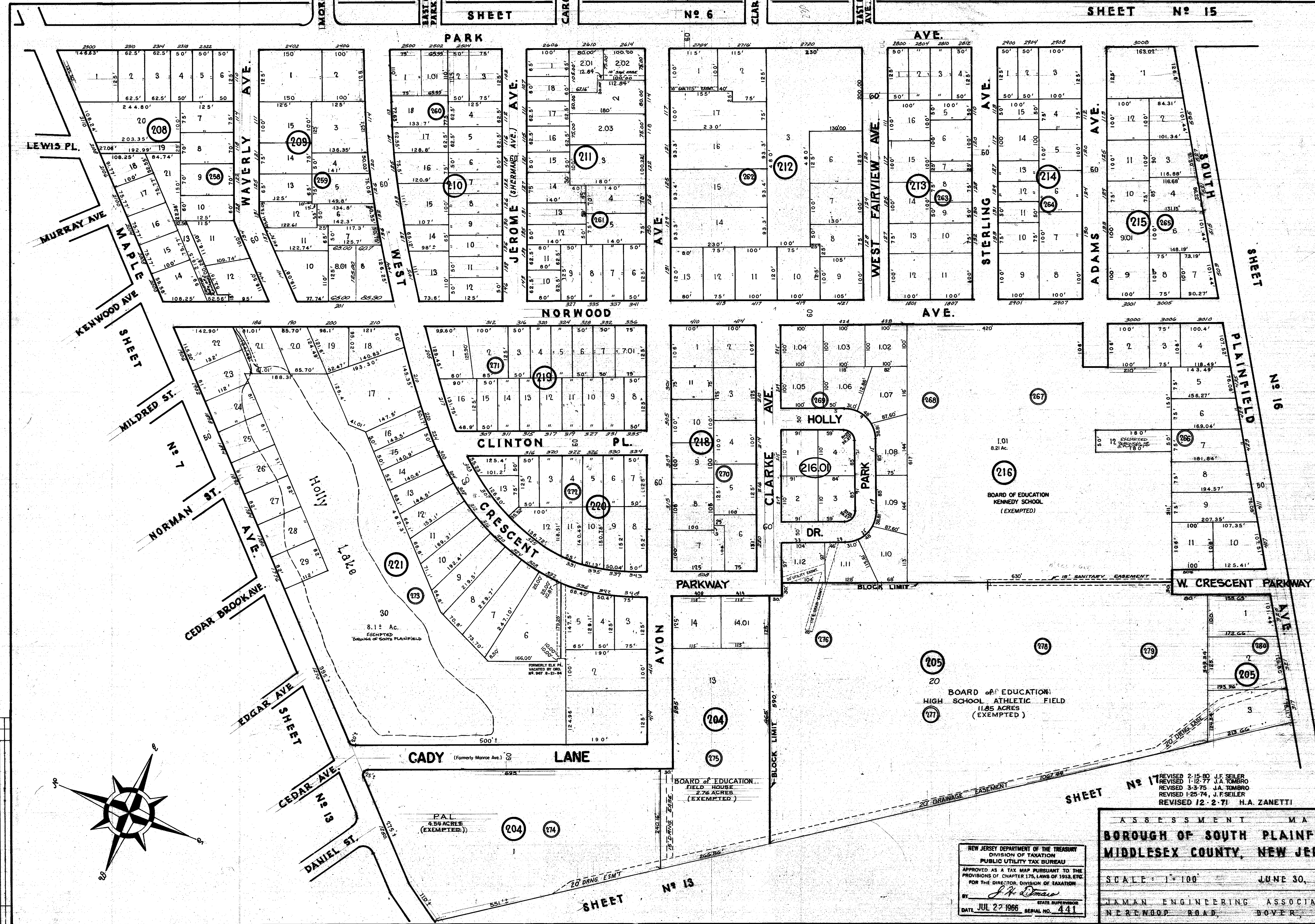
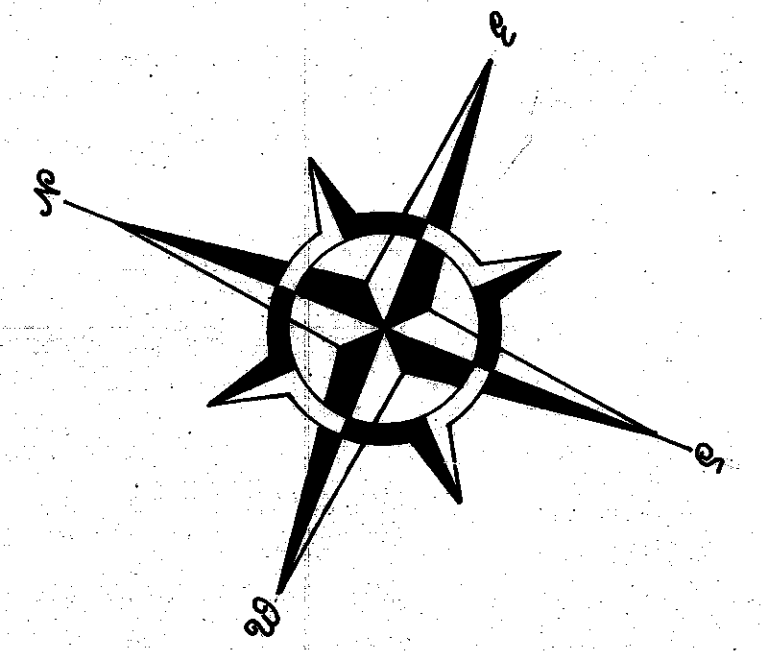


DATE	DESCRIPTION
2-17-52	Minor Acreage Change to Cedar Lane, the Old of 238
3-1-52	Minor Acreage Change to Cedar Lane, the Old of 238
3-1-52	Minor Acreage Change to Cedar Lane, the Old of 238
3-1-52	Minor Acreage Change to Cedar Lane, the Old of 238
3-1-52	Minor Acreage Change to Cedar Lane, the Old of 238
3-1-52	Minor Acreage Change to Cedar Lane, the Old of 238
3-1-52	Minor Acreage Change to Cedar Lane, the Old of 238
3-1-52	Minor Acreage Change to Cedar Lane, the Old of 238
3-1-52	Minor Acreage Change to Cedar Lane, the Old of 238
3-1-52	Minor Acreage Change to Cedar Lane, the Old of 238



NEW JERSEY DEPARTMENT OF THE TREASURY
 DIVISION OF TAXATION
 PUBLIC UTILITY TAX BUREAU
 APPROVED AS A TAX MAP PURSUANT TO THE
 PROVISIONS OF CHAPTER 175, LAWS OF 1913, ETC.
 FOR THE DIRECTOR, DIVISION OF TAXATION
 BY *J. H. Omaso*
 STATE SUPERVISOR
 DATE JUL 27 1966 SERIAL NO. 441

ASSESSMENT MAP
BOROUGH OF SOUTH PLAINFIELD
MIDDLESEX COUNTY, NEW JERSEY
 SCALE: 1" = 100' JUNE 30, 1965
 TAMAN ENGINEERING ASSOCIATES
 NERENBOD ROAD, DOVER, N. J.