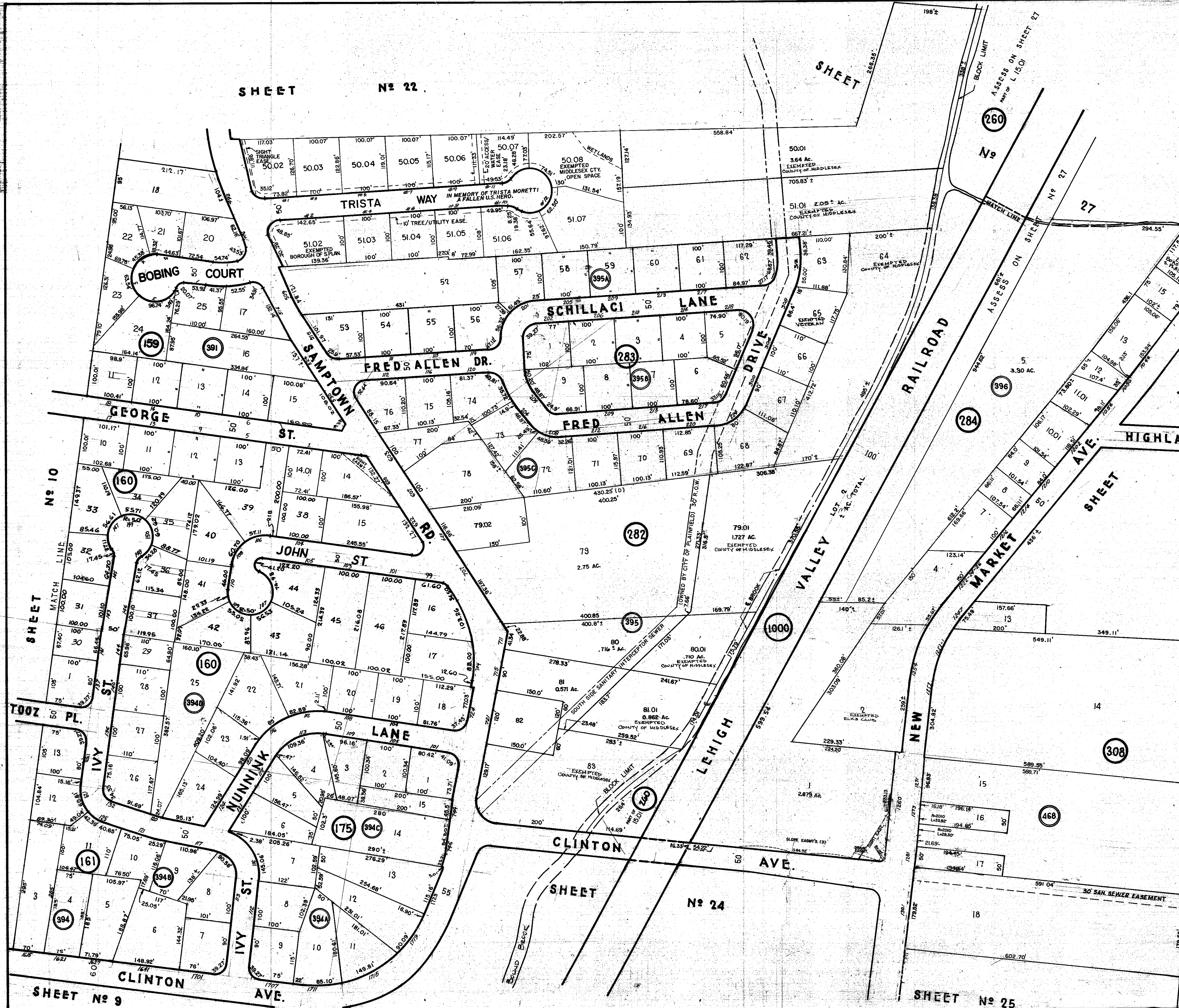


3/31/65 RICHARD A. MORALLE, P.L.S. 5107
REVISED 1-12-77 J.A. TOMBERO
REVISED 3-3-75 J.A. TOMBERO
REVISED 2-15-80 J.F. SELER
REVISED 12-2-71 H.A. ZANETTI



REVISED 3-3-75 J.A. TOMBERO
REVISED 1-12-77 J.A. TOMBERO
REVISED 2-15-80 J.F. SELER
REVISED 12-2-71 H.A. ZANETTI

NEW JERSEY DEPARTMENT OF THE TREASURY
DIVISION OF TAXATION
PUBLIC UTILITY TAX BUREAU
APPROVED AS A TAX MAP PURSUANT TO THE
PROVISIONS OF CHAPTER 175, LAWS OF 1943, ETC.,
FOR THE DIRECTOR, DIVISION OF TAXATION
BY *J. H. [Signature]*
DATE JUL 22 1966 STATE BUREAU
SERIAL NO. 441

REVISED 12-2-71 H.A. ZANETTI

ASSESSMENT MAP
BOROUGH OF SOUTH PLAINFIELD
MIDDLESEX COUNTY, NEW JERSEY
SCALE: 1"=100' JUNE 30, 1965
JAMAN ENGINEERING ASSOCIATES
NORWOOD ROAD DOVER, N.J.