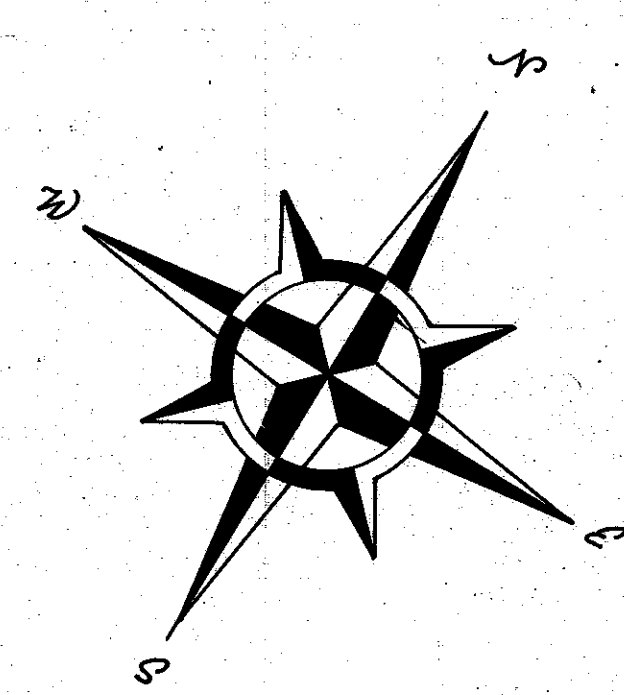
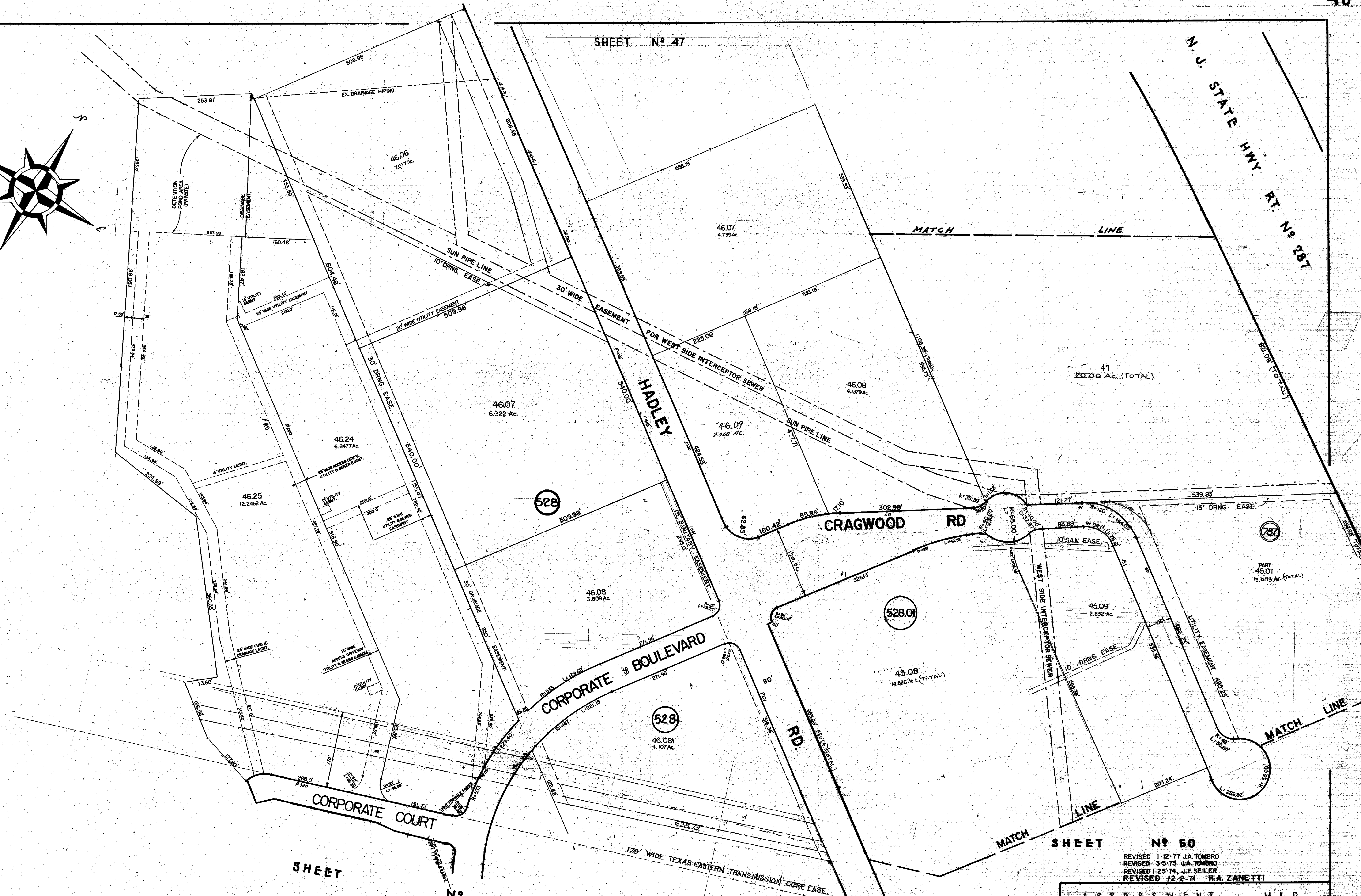


N. J. STATE HWY. RT. No 287

SHEET N° 47



SHEET N° 48



REV.	DESCRIPTION	BY	DATE
1	PREPARED FOR THE TAX MAP	J.A. TOMBO	12-77
2	REVISED TO SHOW CHANGES	J.A. TOMBO	3-75
3	REVISED TO SHOW CHANGES	J.F. SEILER	1-25-74
4	REVISED TO SHOW CHANGES	H.A. ZANETTI	12-2-71

SHEET N° 54

SHEET N° 50

NEW JERSEY DEPARTMENT OF THE TREASURY
 DIVISION OF TAXATION
 PUBLIC UTILITY TAX BUREAU
 APPROVED AS A TAX MAP PURSUANT TO THE
 PROVISIONS OF CHAPTER 175, LAWS OF 1913, ETC.
 FOR THE DIRECTOR, DIVISION OF TAXATION
J. H. Thomas
 DATE JUL 22 1966 SERIAL NO. 441

ASSESSMENT MAP
 BOROUGH OF SOUTH PLAINFIELD
 MIDDLESEX COUNTY, NEW JERSEY
 SCALE 1" = 100' JUNE 30, 1965
 JAMAN ENGINEERING ASSOCIATES
 NEREWOD ROAD, DOVER, N. J.

REVISED 2-15-80 J.F. SEILER