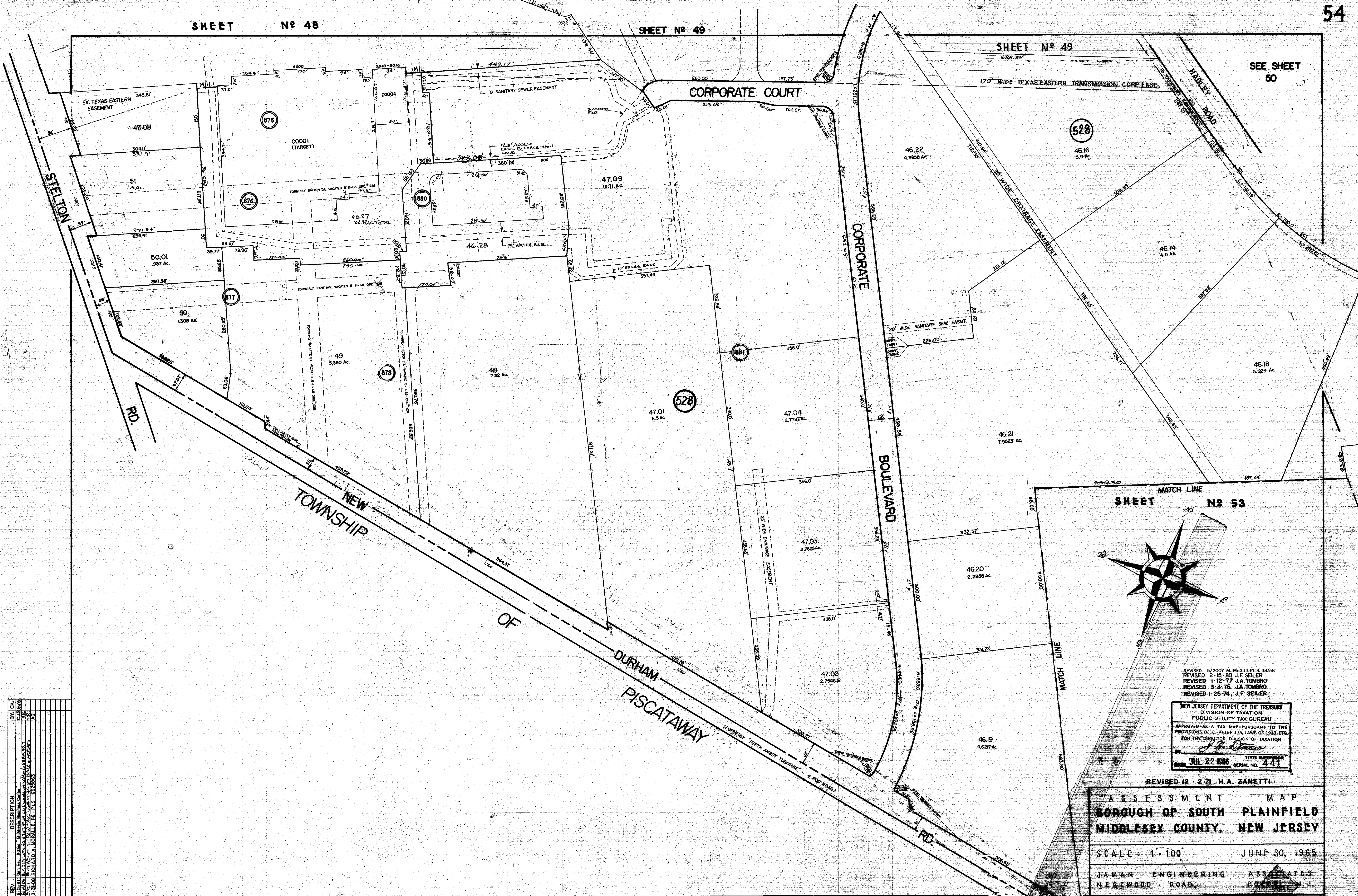
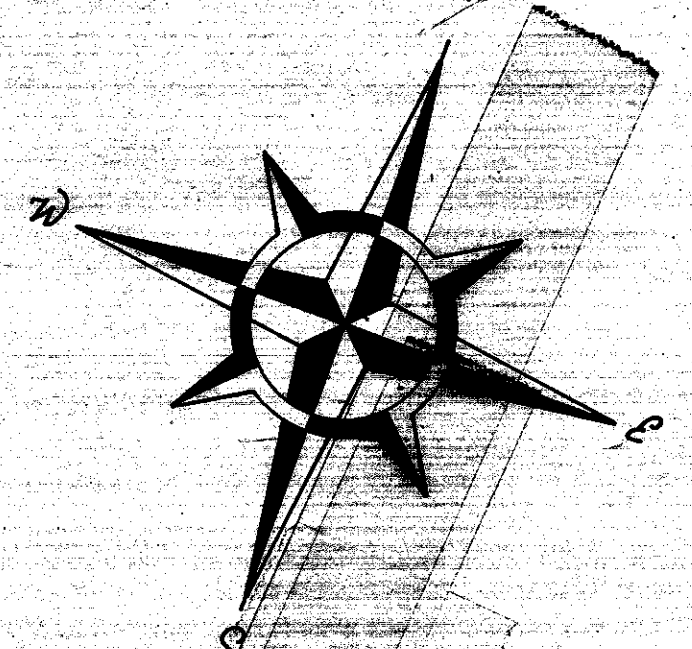


SEE SHEET 50



SHEET No 53



REVISED 5/2007 M.J.MCGUIRE P.L.C. 38338
 REVISED 2-15-80 J.F. SEILER
 REVISED 1-12-77 J.A. TOMBARO
 REVISED 3-3-75 J.A. TOMBARO
 REVISED 1-25-74 J.F. SEILER

NEW JERSEY DEPARTMENT OF THE TREASURY
 DIVISION OF TAXATION
 PUBLIC UTILITY TAX BUREAU
 APPROVED AS A TAX MAP PURSUANT TO THE
 PROVISIONS OF CHAPTER 175, LAWS OF 1913, ETC.
 FOR THE OFFICE OF THE DIVISION OF TAXATION
J. J. DeMaio
 JUL 22 1966 STATE SUPERVISOR
 SERIAL NO. 441

REVISED 12-2-71 H.A. ZANETTI

ASSESSMENT MAP
 BOROUGH OF SOUTH PLAINFIELD
 MIDDLESEX COUNTY, NEW JERSEY
 SCALE: 1"=100' JUNE 30, 1965
 JAWAN ENGINEERING ASSOCIATES
 NEWWOOD ROAD, DOVER, N.J.

REV.	BY	CHK.	DESCRIPTION
1	C.S.	A.Z.	Initial Map, Asses. Middlesex County
2	R.S.	A.Z.	Revised Map, Asses. Middlesex County
3	R.S.	A.Z.	Revised Map, Asses. Middlesex County
4	R.S.	A.Z.	Revised Map, Asses. Middlesex County
5	R.S.	A.Z.	Revised Map, Asses. Middlesex County
6	R.S.	A.Z.	Revised Map, Asses. Middlesex County
7	R.S.	A.Z.	Revised Map, Asses. Middlesex County
8	R.S.	A.Z.	Revised Map, Asses. Middlesex County
9	R.S.	A.Z.	Revised Map, Asses. Middlesex County
10	R.S.	A.Z.	Revised Map, Asses. Middlesex County